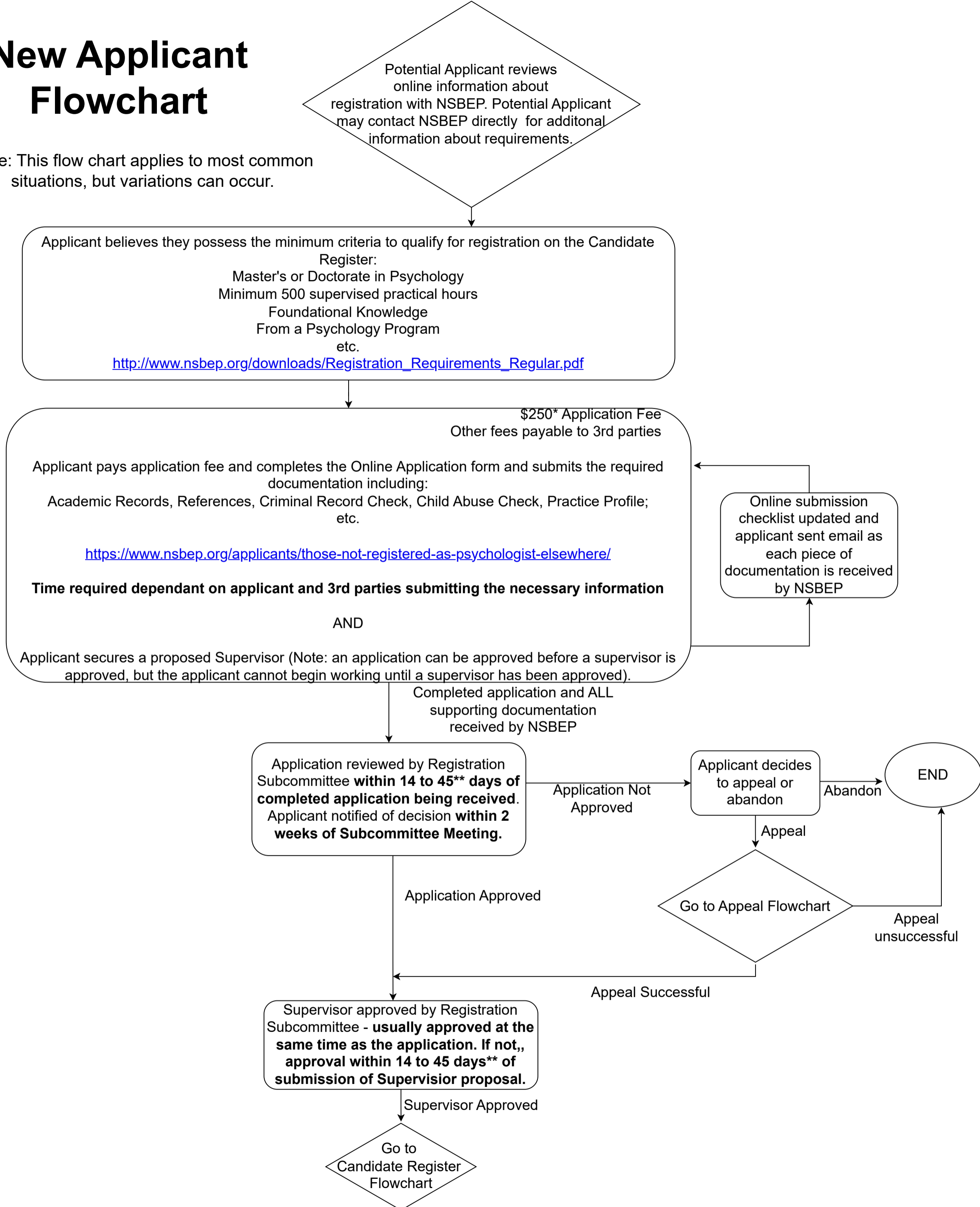


New Applicant Flowchart

Note: This flow chart applies to most common situations, but variations can occur.



* Dollar fees are in Canadian funds unless otherwise indicated. Dollar figures were current when this document was last updated.. For a complete list of current fees, go to <https://www.nsbep.org/about-nsbep/all-fees/>

** The Registration Subcommittee meets once per month and requires that all materials be submitted at least 2 weeks in advance of the meeting. For a list of Board meeting dates, go to https://www.nsbep.org/about-nsbep/information-for-registrantsfor-all-registrantsnewsmeeting_dates/